
Alcohol related health harm and the role of licensing

The local picture in Leicester



Leicester
City Council

Overview of alcohol health harm

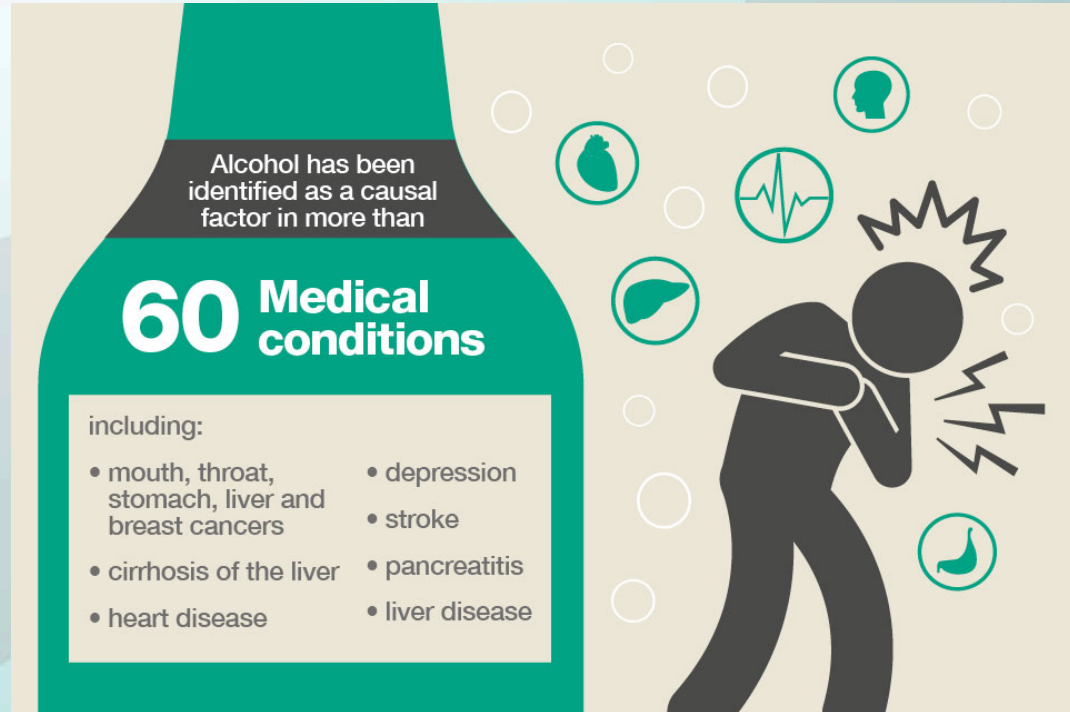
Alcohol is an identified causal factor for more than 60 medical conditions.

Alcohol is a leading cause for premature mortality.

As the volume of alcohol consumed increases so does the risk to health.

Single bouts of heavy drinking “**binge drinking**” is associated with:

- alcohol related crime
- physical injury
- increased risk of cardiovascular disease.



Alcohol and age



Younger drinkers are more likely to binge drink.

However frequent and most harmful drinking tends to be among middle aged people and this group are most likely to drink every day.

Alcohol and deprivation



Adults in higher income households are more likely to drink weekly at levels that put them at increased risk.

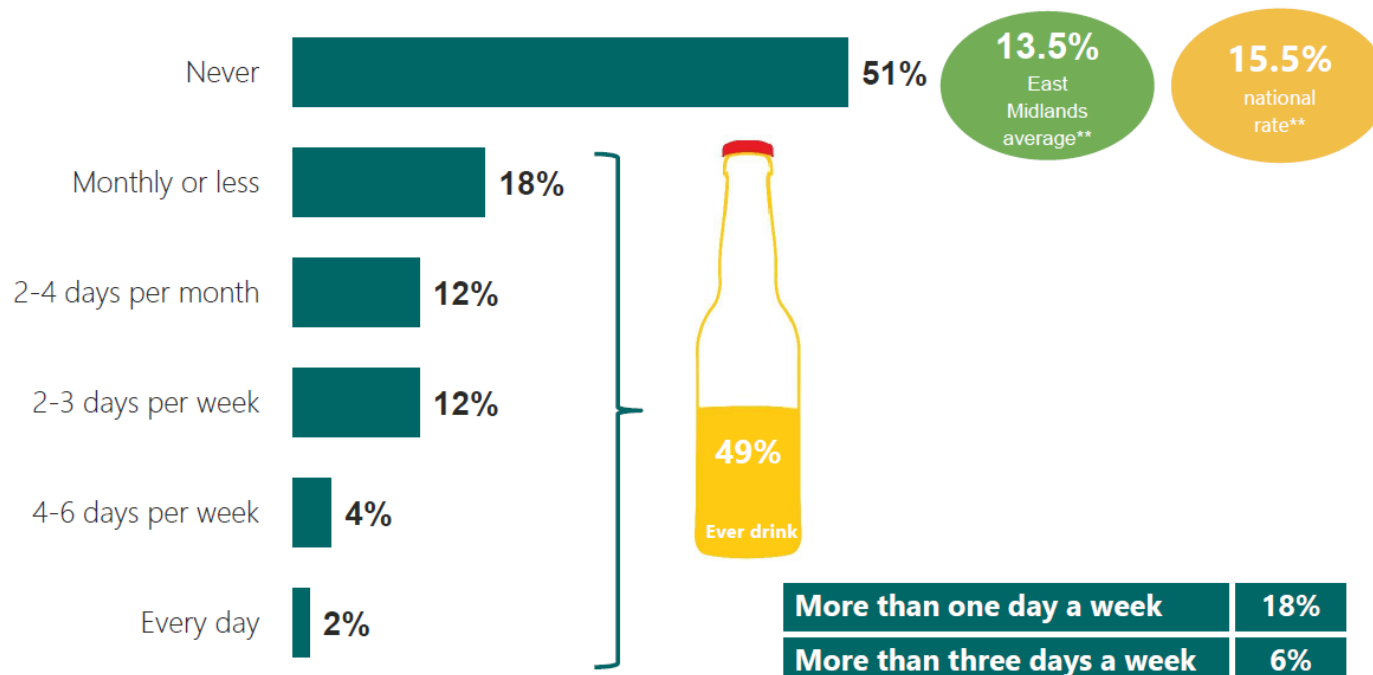
However, the most severe alcohol harm is experienced by those in the lowest socio economic groups.

This is the alcohol harm paradox.

Over half of Leicester residents never drink – a significant rise since 2015

More residents in Leicester profess to never drink alcohol than the previous survey (51% never vs. 45% in 2015)*. One in five (18%) residents drink more than once a week. Public Health England figures suggest Leicester is a standout when it comes to such high abstinence of alcohol** – and this is reflected by the data collected in this survey.

Q39. How often do you have a drink containing alcohol?



Base: All valid responses (2224) : Fieldwork dates : 5th March – 25th July 2018

*Caution: 5% of residents said 'Never, but I have in the past' in 2015 – this was not an answer code this year

**Public Health England Report on Alcohol Consumption 2011-2015

Source: Ipsos MORI



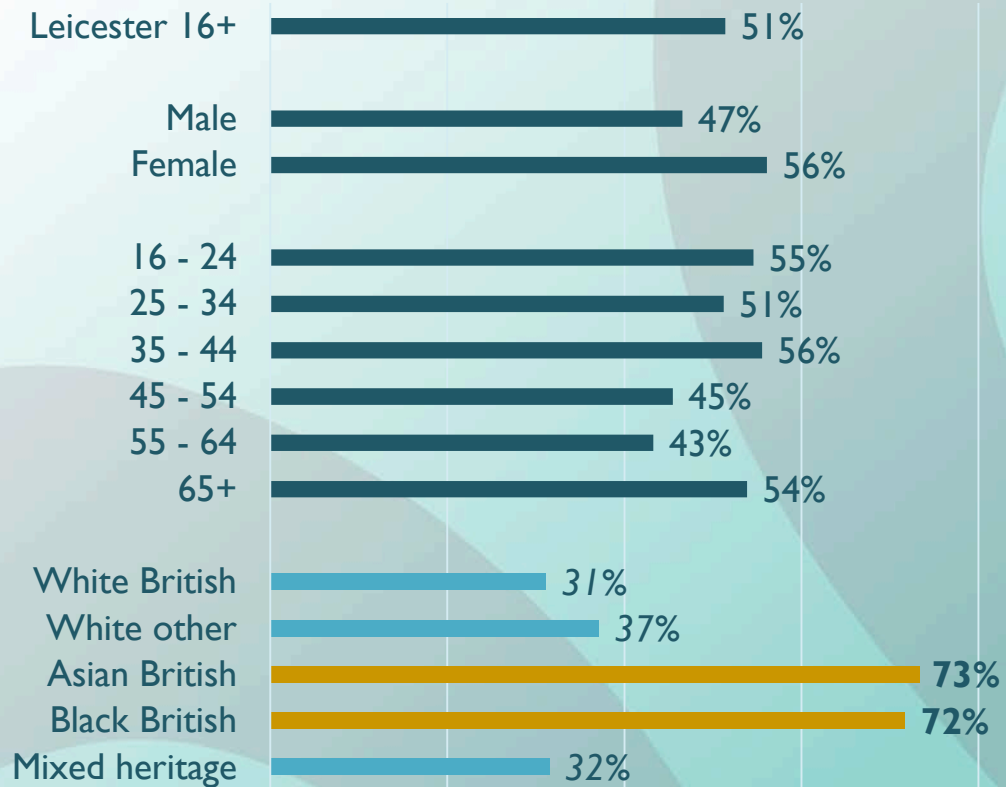
A high proportion of the Leicester population abstain from alcohol

About half of Leicester's adult population have never drunk alcohol significantly higher than the national rate and many of our comparators.

The religious and demographic makeup of Leicester is a factor in the high alcohol abstaining population in Leicester.

Asian British and Black British communities are significantly more likely to have never drunk alcohol.

% of 16+ population who have never drunk alcohol



Similar

Significantly higher than Leicester

Significantly lower than Leicester

So who are the Leicester drinkers...

Males, older age groups, and White British residents are all significantly more likely to drink frequently.

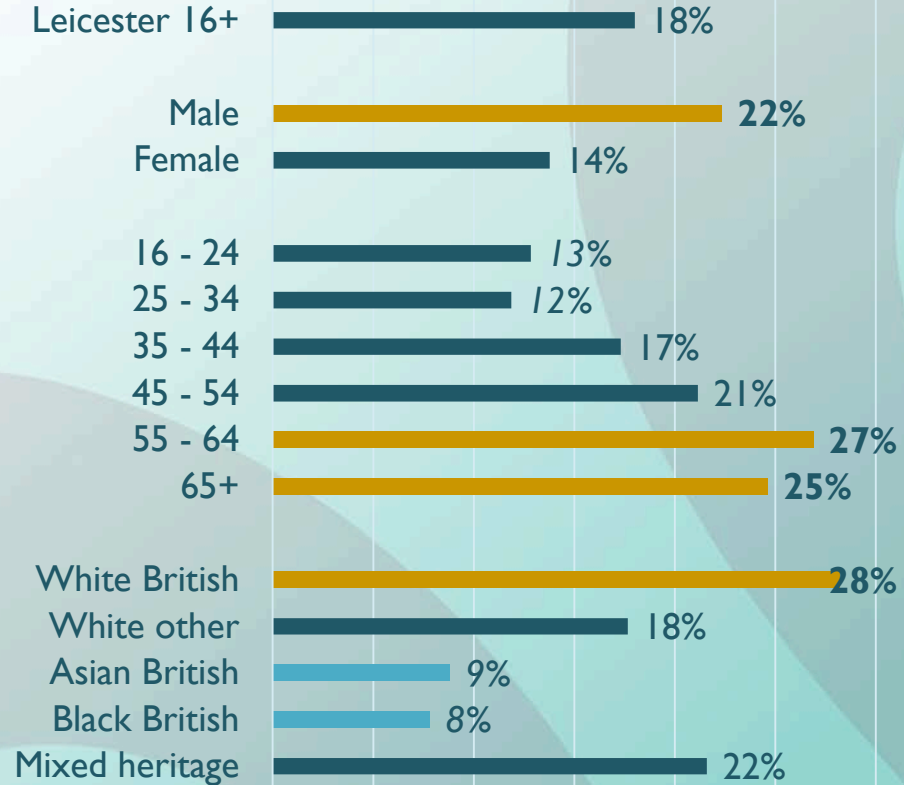
The survey identifies the following as more likely to drink over the recommended limit and more likely to drink often:

Males

65+

White British

% of 16+ population drinking alcohol at least weekly



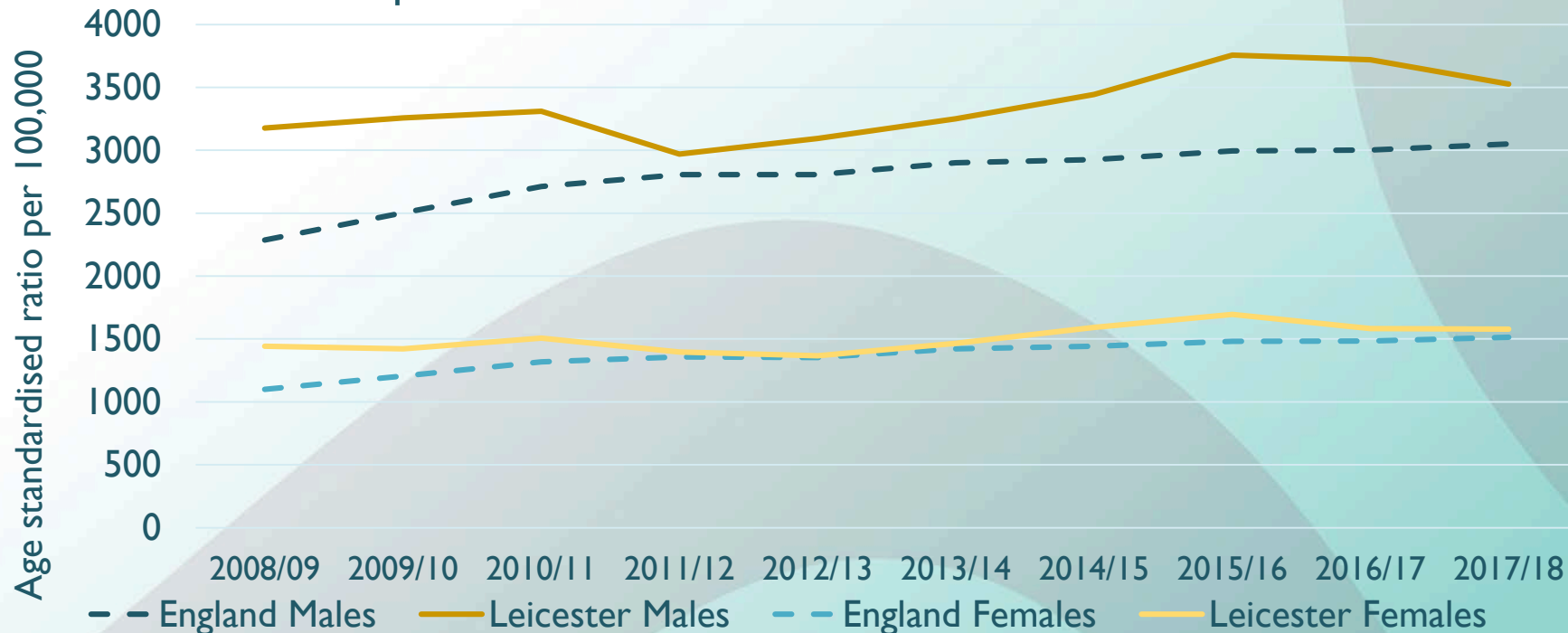
Similar

Significantly higher than Leicester

Significantly lower than Leicester

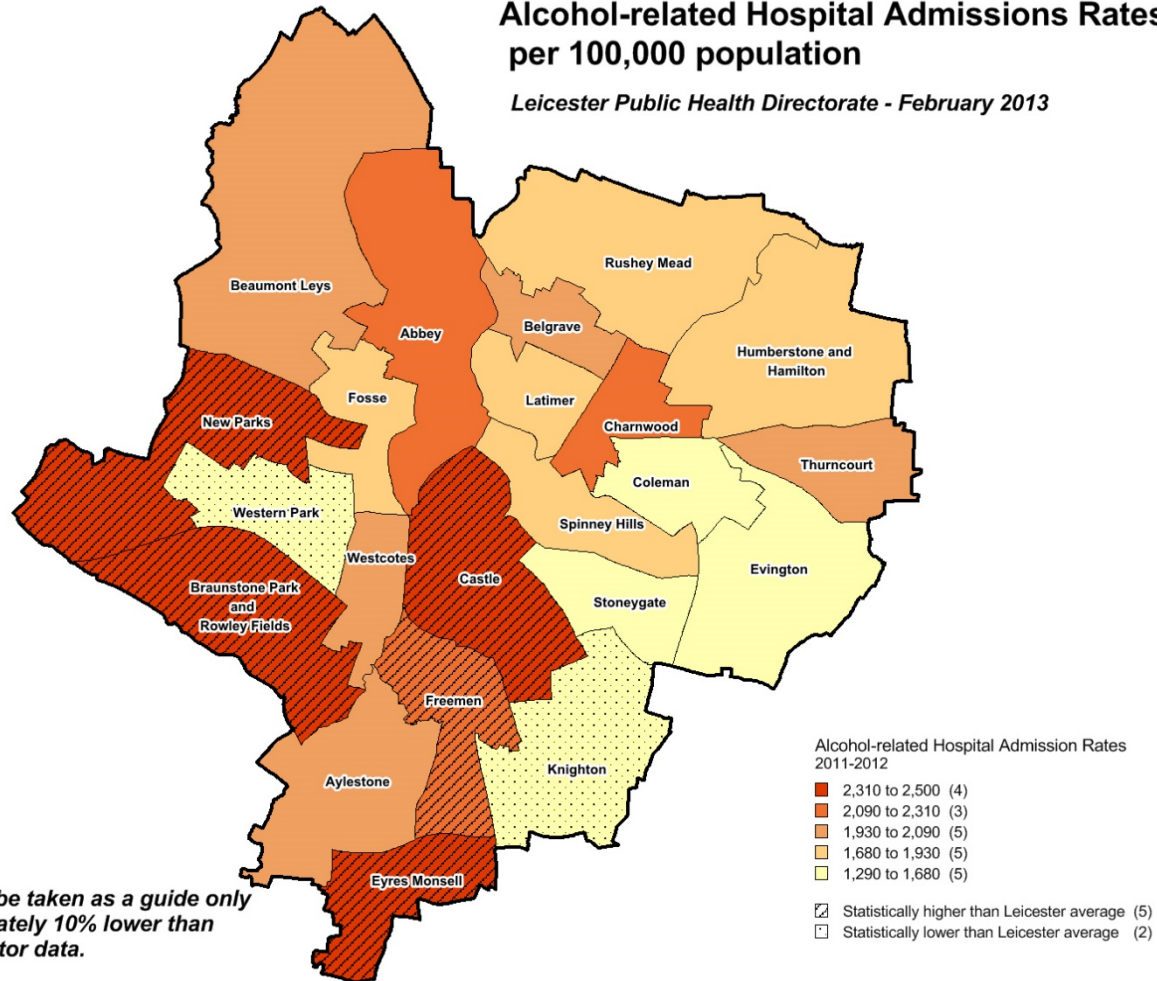
Leicester reports a significantly higher rate for alcohol related hospital admissions

Hospital admissions for alcohol related conditions



Alcohol-related Hospital Admissions Rates per 100,000 population

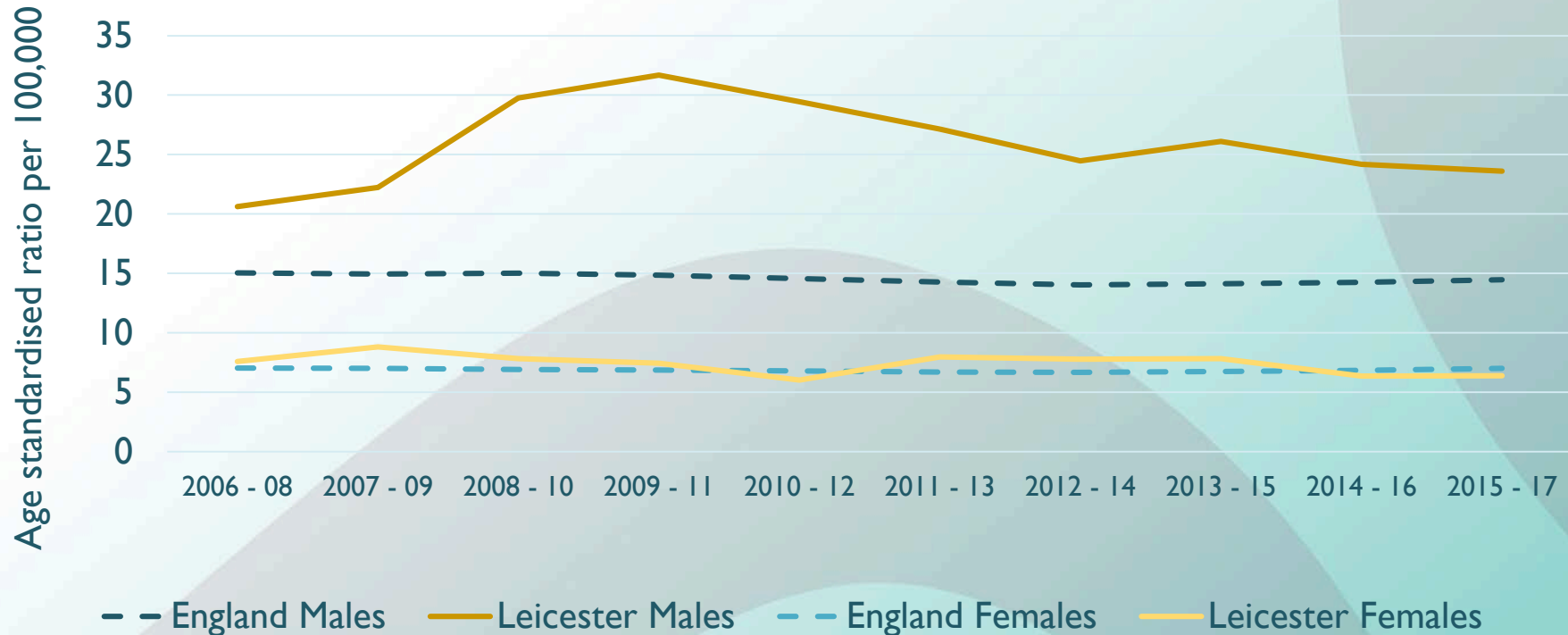
Leicester Public Health Directorate - February 2013



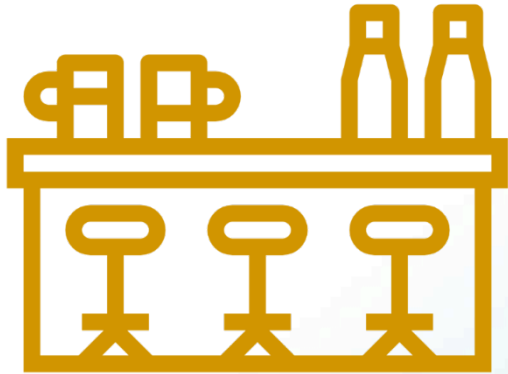
Note: Ward rates should be taken as a guide only as local data is approximately 10% lower than published national indicator data.

Alcohol specific mortality is significantly higher than the national rate

Alcohol specific mortality for men and women: rate per 100,000



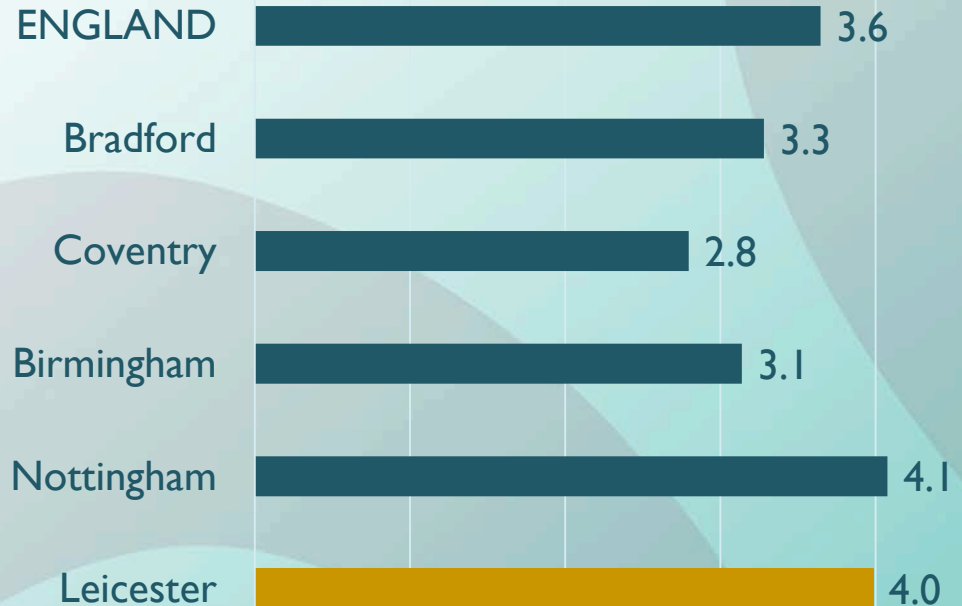
Leicester has many premises to consume alcohol



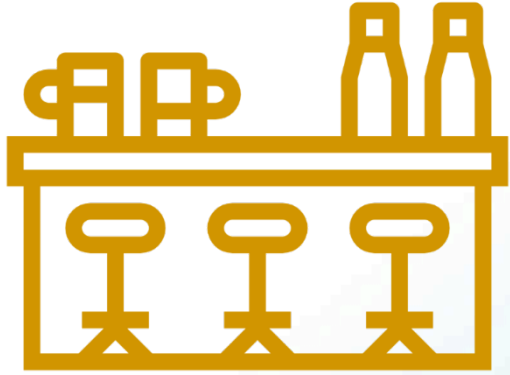
Leicester has a higher rate of licensed premises compared to our comparator authorities.

The city also reports **significantly higher sales** of **beer** and **spirits** compared to the national average.

Number of licensed premises per 1,000 of the population



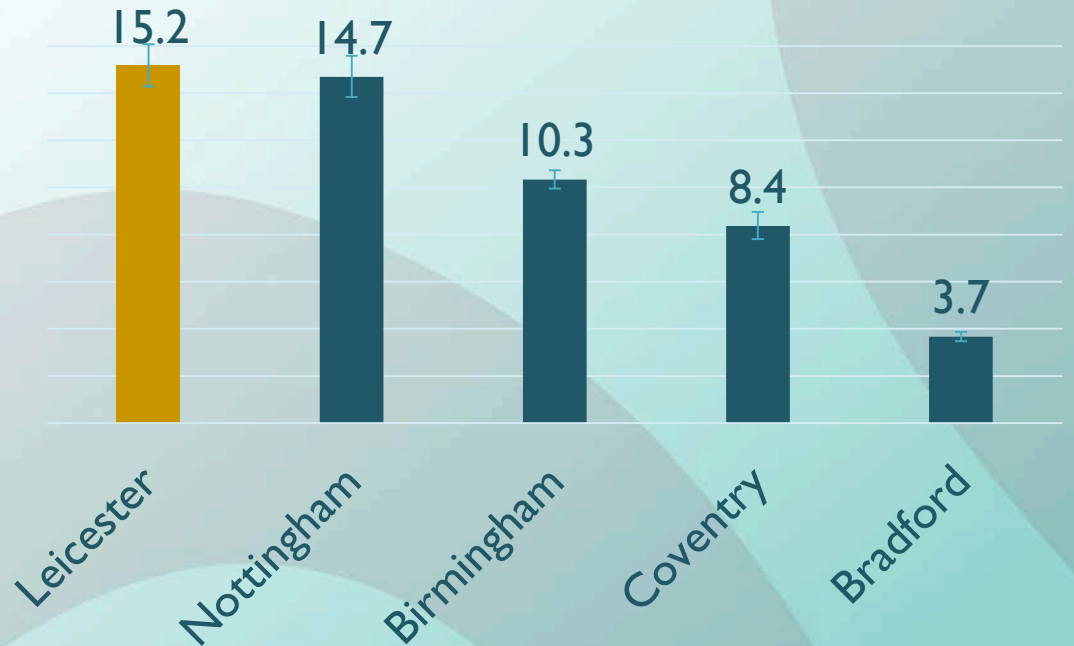
Leicester has many premises to consume alcohol

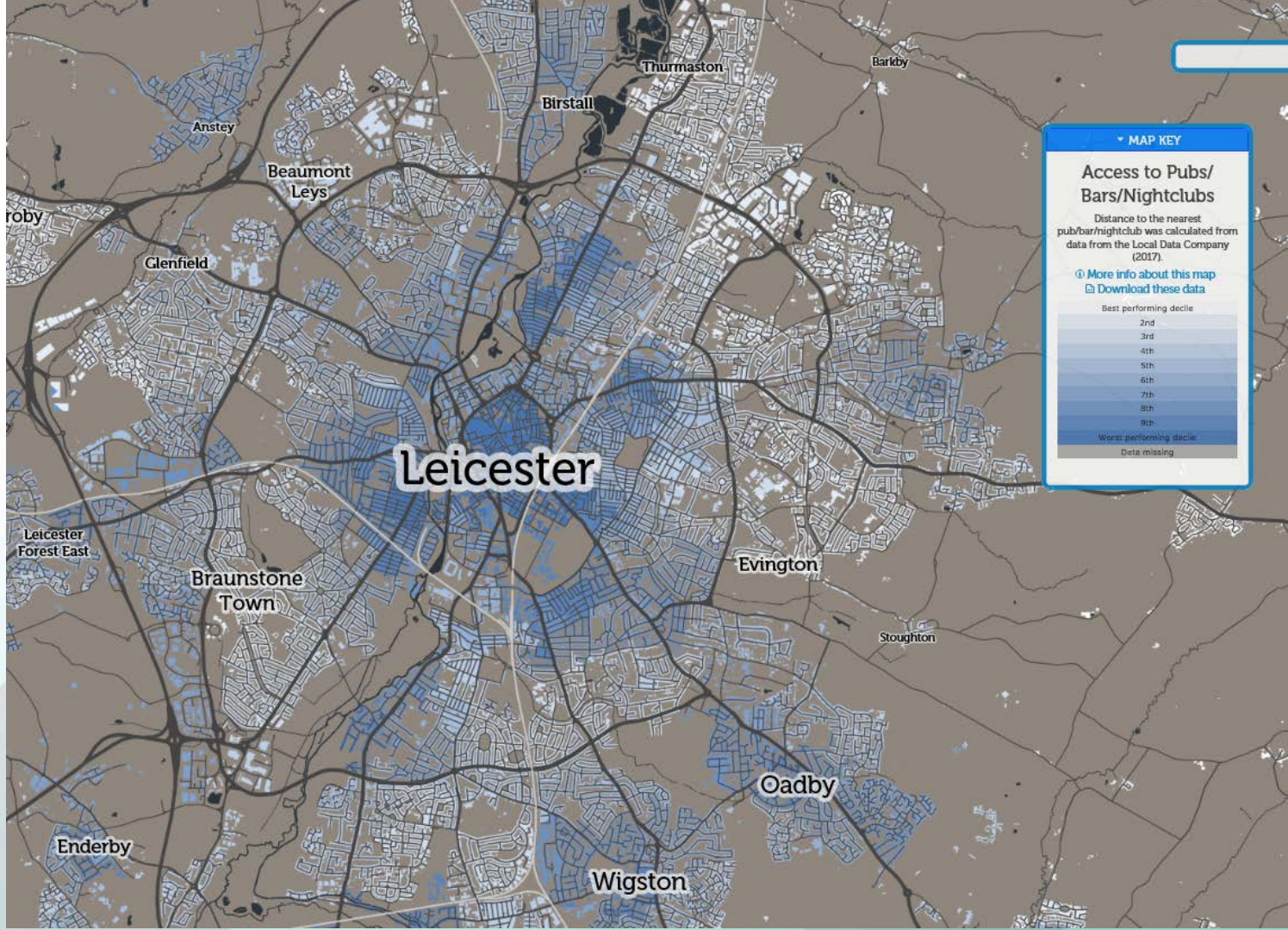


Leicester has a higher rate of licensed premises compared to our comparator authorities.

The city also reports **significantly higher sales** of **beer** and **spirits** compared to the national average.

Number of premises licensed to sell alcohol per square kilometre





MAP KEY

Access to Pubs/ Bars/Nightclubs

Distance to the nearest pub/bar/nightclub was calculated from data from the Local Data Company (2017).

[More info about this map](#)

[Download these data](#)

Best performing decile

2nd

3rd

4th

5th

6th

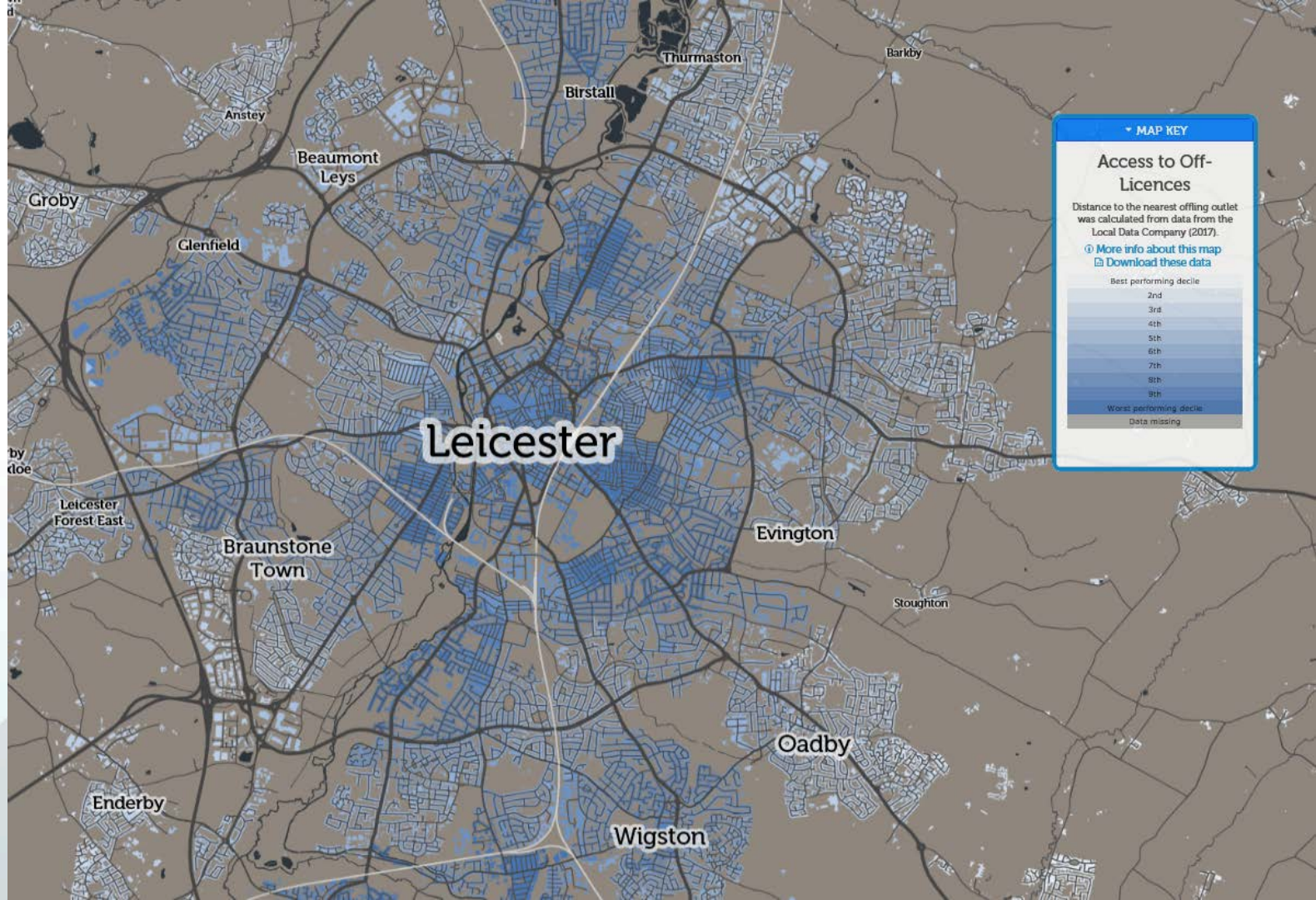
7th

8th

9th

Worst performing decile

Data missing



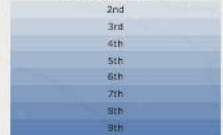
MAP KEY

Access to Off-Licences

Distance to the nearest offing outlet was calculated from data from the Local Data Company (2017).

- [More info about this map](#)
- [Download these data](#)

Best performing decile



Worst performing decile:

Data missing

Role of Licensing

- Health is not a licensing objective
- Health (through the DPH) is a statutory consultee for licensing applications
- Licensing Statement
- Cumulative Impact Zones
- Local agreements/conditions